

CHAMOT

Recombinant Human M- CSF

CM116-5HP
CM116-20HP
CM116-100HP
CM116-500HP
CM116-1000HP



CHAMOT

喬默生物技術(上海)有限公司
CHAMOT BIOTECHNOLOGY CO., LTD.

CONTENT

1 产品简介

2 产品组成

3 产品储存

4 产品使用

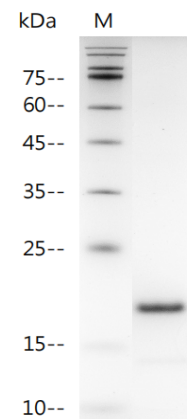
Recombinant Human M-CSF (Macrophage colony stimulating factor)

编号:	CM116-5HP CM116-20HP CM116-100HP CM116-500HP CM116-1000HP	规格:	5 µg 20 µg 100 µg 500 µg 1 mg
类别:	重组蛋白	应用:	Functional Assay

产品简介

描述: Macrophage Colony-Stimulating Factor (M-CSF), is a secreted cytokine which causes hematopoietic stem cells to differentiate into macrophages or other related cell types. The active form of M-CSF/CSF-1 is found extracellularly as a disulfide-linked homodimer, and is thought to be produced by proteolytic cleavage of membrane-bound precursors. M-CSF/CSF-1 induces cells of the monocyte/macrophage lineage. It also plays a role in immunological defenses, bone metabolism, lipoproteins clearance, fertility and pregnancy. Upregulation of M-CSF/CSF-1 in the infarcted myocardium may have an active role in healing not only through its effects on cells of monocyte/macrophage lineage, but also by regulating endothelial cell chemokine expression.

来源: *Escherichia coli*
纯度: >98% as determined by SDS-PAGE. Ni-NTA chromatography.
生物学活性: Measure by its ability to induce proliferation in NFS-60 cells. The ED₅₀ for this effect is < 1 ng/mL. The specific activity of recombinant human M-CSF is approximately > 2.5 × 10⁸ IU/mg.



SDS-PAGE analysis of recombinant human M-CSF

内毒素检测: < 0.1 EU per 1 µg of the protein by the LAL method.

蛋白序列: MEEVSEYCSHMIGSGHLQSLQRLIDS
 QMETSCQITFEFVDQEQLKDPVCYLK
 KAFLLVQDIMEDTMRFRDNTNPNAIAI
 VQLQELSLRLKSCFTKDYEEDKACVR
 TFYETPLQLLEKVKNVFNETKNLLDKD
 WNIFSKNCNNSFAECSSQGHERQSE
 GS with polyhistidine tag at the C-terminus

产品组成

成分: 从含有 1X PBS, pH 7.4 溶液中冻干的蛋白质.

产品储存/运输

产品形式	储存温度	储存时间
冻干粉	-20°C至-80°C	自收到之日起1年
重悬液 (初始)	2°C至8°C	不超过1周
重悬液 (经稀释)	-20°C至-80°C	3到6个月

运输方式: 蓝冰

产品使用

- 1、开盖前，建议3000-3500rpm离心5min。
- 2、推荐使用无菌水重悬冻干粉，溶液浓度不低于100µg/mL，不高于1mg/mL，并室温静置至少20min以充分溶解。勿涡旋剧烈振荡。
- 3、重悬后的溶液，2-8°C无菌保存不超过1周。
- 4、如需长期保存，推荐使用无菌的含载体蛋白（如0.1%BSA、10%FBS 或5%HSA）的溶液进一步稀释（不低于10ug/mL）后分装保存，-20°C至-80°C无菌保存3到6个月。无血清实验需求时，可更换为 5%海藻糖溶液作为载体。避免反复冻融。

WB= Western Blot; IP= Immunoprecipitation; IF= Immunofluorescence; IHC= Immunohistochemistry;
 FACS= Fluorescence activated Cell Sorting; FA= Functional Assay